

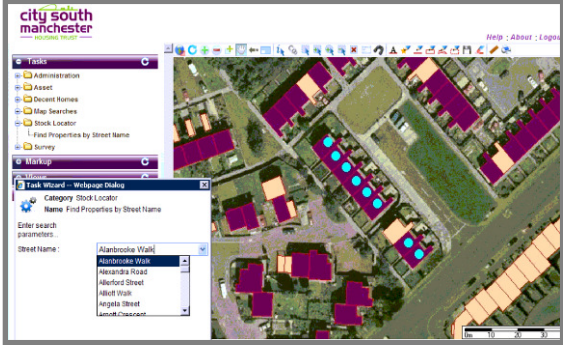


Geographic Information Solutions for Housing



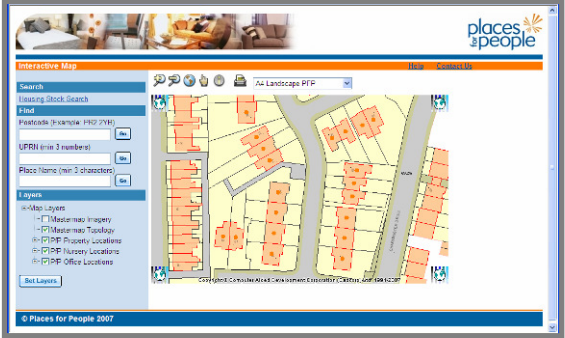
Housing organisations are increasingly recognising the value of location-based information to improve their performance and customer service.

Geographic information is vital to understanding your business – from knowing where anti-social behaviour is occurring through to helping manage and report your asset management programmes. Much of this information already exists within your business, but by integrating traditional sources of information with the geographic context, you will add significant value to your business reporting and associated decisions.



GeoSolveIT can help your organisation implement geographic information solutions. Our solutions help you analyse the issues impacting your residents and housing stock, improve efficiency and customer service.

We have a successful track-record of implementing geographic solutions that provide lasting benefits to housing and property owners. Our solutions help to integrate data from multiple sources and combine this into a highly intuitive interface.



Housing Solutions

- Stock location
- Void reporting and analysis
- Asset management
- Decent Homes reporting
- Land management
- Investment planning
- ASB reporting
- SAP/thermal comfort reporting
- Operations reporting (e.g call-servicing reporting)

Our Services

- Advisory services
- GIS implementation
- Desktop and web software
- Supporting mapping data
- Supporting business data
- Forecasting and economic analysis
- House price forecasts
- Address management solutions
- Training
- Managed hosted services
- Business analysis tools

Further information:
 GeoSolveIT Limited
 Leatherhead Enterprise Centre
 Randalls Road
 Leatherhead
 SURREY KT22 7RY
 Tel: +44 (0) 1372 825184
 Fax: +44 (0) 1372 825134
 Email: Info@GeoSolveIT.com
 www: www.GeoSolveIT.com



GEOSOLVEIT
 Geographic Information Systems

Creating value through geography

