

Introduction to GeoSolveIT's Consultancy Services

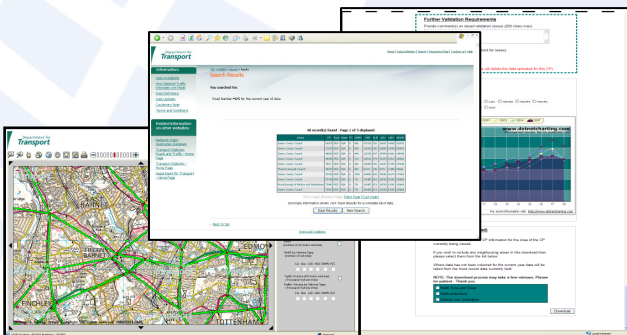


About GeoSolveIT

GeoSolveIT is a consulting-led provider of GIS solutions. We understand the issues that can often confront a client when setting up a GIS. As an independent provider of geographic information solutions we have the experience and knowledge to help our clients maximise the benefit of spatial technology and at the same assist in making its implementation as simple as possible.

Widely recognised as a key tool to help organisations better manage their business, GIS provides the ability to integrate and visualise data from across an organisation within a unified reporting environment. Our success includes delivery of award winning projects for our government clients. We are an ISO9001 accredited consultancy subject to independent external audit to ensure the continuance of our quality systems.

GeoSolveIT has an impressive portfolio of clients and a track record of providing technology independent advice and support to our clients



"I expect a wide range of people and organisations to benefit from improved access to the Department's traffic data through this award-winning website. It's essential for Government and its stakeholders to work together to share information more effectively. This innovative use of GIS technology is a great example of what can be achieved."

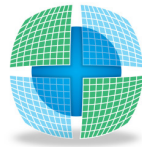
UK Transport Minister Stephen Ladyman

About our GIS Consulting Services

Our experienced GIS consultants help you identify your GIS requirements and advise you on how best to implement and deliver the GIS solution that best meets your needs. GeoSolveIT can advise you through all the stages of your project, including defining a strategy for the implementation of your GIS. At GeoSolveIT we have consultants with the necessary experience to act as trusted advisors to support you in these decisions, underpinned by working in a wide range of market sectors. Through this breadth of knowledge and experience our GIS consultants we help you to deliver a successful solution. We aim to support you throughout your project.

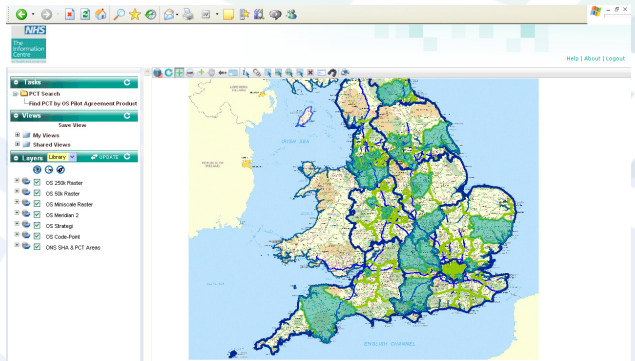
Our GIS consulting services include:

- Assessment of your GIS needs;
- Developing the business case;
- Preparing your GIS strategy;
- Preparing an Implementation Plan
- Preparation of all your technical documentation, including requirements specification, data capture needs and system architecture;
- Preparing your Information Management Plan, business processes and standards;
- Advising on market place technologies to meet your business needs;
- Supporting the procurement of spatial solutions, including tender evaluation and negotiation;
- On-project support and assisting our clients manage the full implementation and deployment of solutions.



Below is a selection of projects where GeoSolveIT's consultants have been engaged to support our clients.

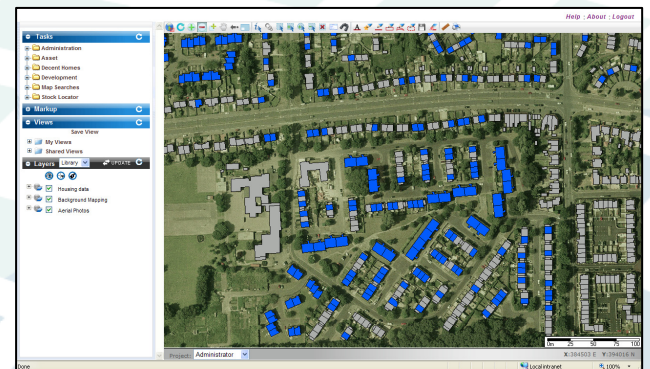
Digital Mapping Agreement, National Health Service (NHS): The NHS Information Centre is a key provider of statistical information on the performance of the NHS. GeoSolveIT's consultants supported the NHS Information Centre Geography and Demography team in the procurement of a national digital mapping agreement. Working with the NHS team and all the key stakeholders, including all the Ambulance Trusts, we helped throughout the procurement of the agreement. This included defining the specifications, and supporting the client during tender preparation, evaluation and contract award.



GeoSolveIT provide technical advice and support with the NHS, Europe's largest employer, to setup and establish a national mapping agreement.

The project resulted in the establishment of a national mapping agreement that allows all NHS organisations (over 300) the potential to sign-up and part of an agreement where all digital mapping data can be shared and used on preferential terms. It also meant that the Ambulance Trusts (previously part of a separate agreement) could now work with and share mapping data with other parts of the NHS and to access the required datasets.

City South Manchester, Corporate GIS: GeoSolveIT was commissioned in September 2008 to implement a corporate GIS solution for this newly formed housing association whose coverage includes Hulme and Moss Side.



GeoSolveIT have:

- Made recommendations on a suitable web-based technology (mindful of their existing GI investment in Esri technologies);
- Support the IT team in the specification and implementation of a GIS Server;
- Provided consultancy and implementation support in the delivery of a range of tools aimed specifically at their asset management programme and reporting compliance to the Government's Decent Homes standards;
- Designed a solution that provides a focused web-based intranet solutions following one-to-one training with our consultant;
- Integration of the GIS with their asset management and housing management system.

Contact information:

GeoSolveIT Limited
Leatherhead Enterprise Centre
Randalls Road
Leatherhead
SURREY KT22 7RY
Tel: +44 (0) 1372 825184
Fax: +44 (0) 1372 825134
Email: Info@GeoSolveIT.com
www.GeoSolveIT.com

